

Implementing FrameMaker Conditional Text Using Epic Editor Profiling

Malcolm Graham
Nortel, Ottawa, Canada

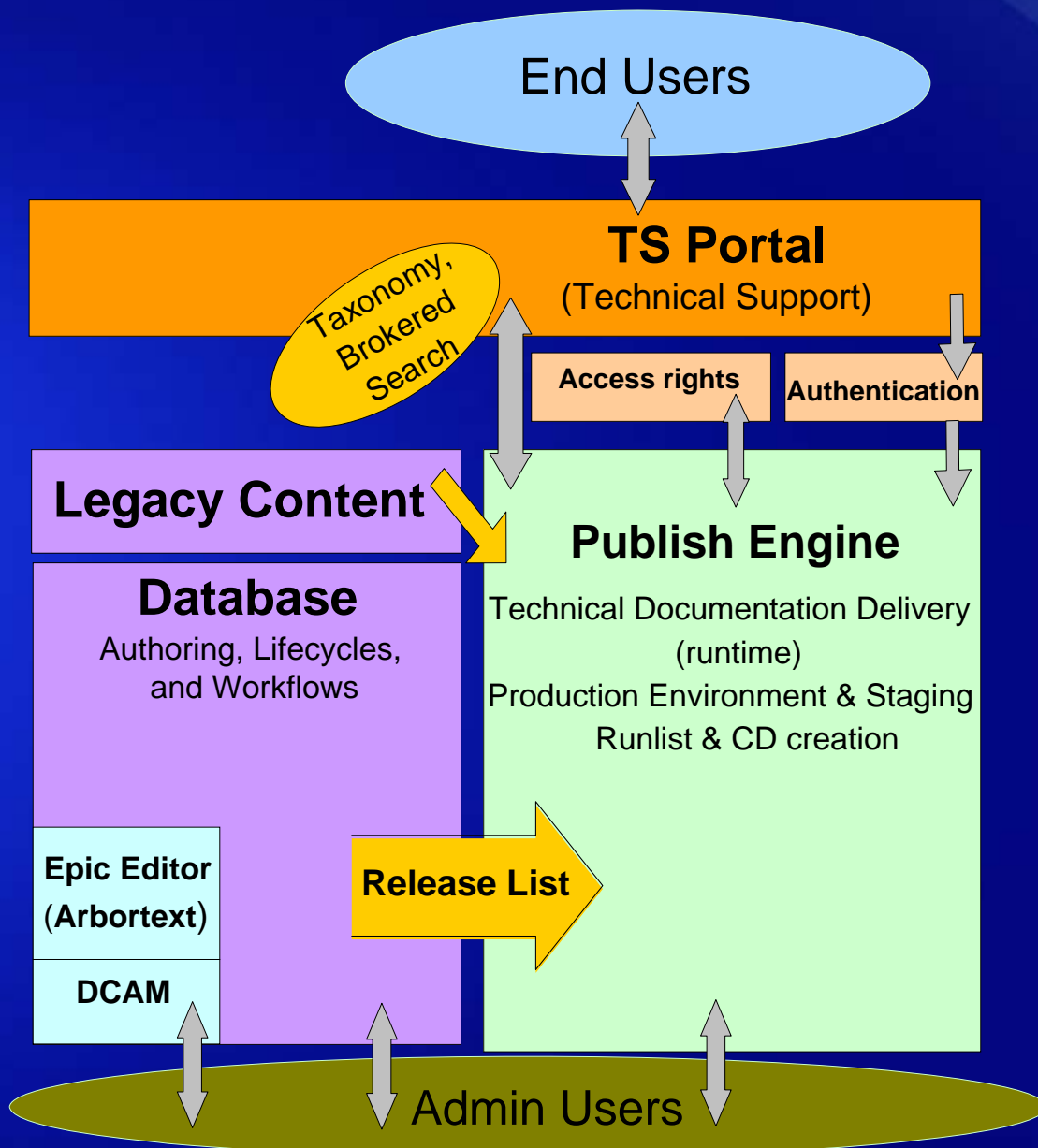
Presentation Purpose

- This presentation demonstrates how conditional text within *FrameMaker*-based documents were converted and maintained within XML-based documents using the *Epic Editor* profiling feature within the **Nortel Technical Documentation Application** (NTDA)
- You will learn how **Nortel** implemented the *FrameMaker* conditional text feature using the *Epic Editor* profiling feature

Current Situation

- **Nortel** is moving from *FrameMaker*-based authoring to *Epic Editor*-based authoring
- **Nortel** is converting approximately 500,000 *FrameMaker* pages to XML
- New XML-based system called the **Nortel Technical Documentation Application** (NTDA)
- Existing *FrameMaker*-based documents use the conditional text feature extensively
- Need to automatically convert conditional text tags to use the *Epic Editor* profiling feature

Nortel Technical Documentation Application (NTDA)

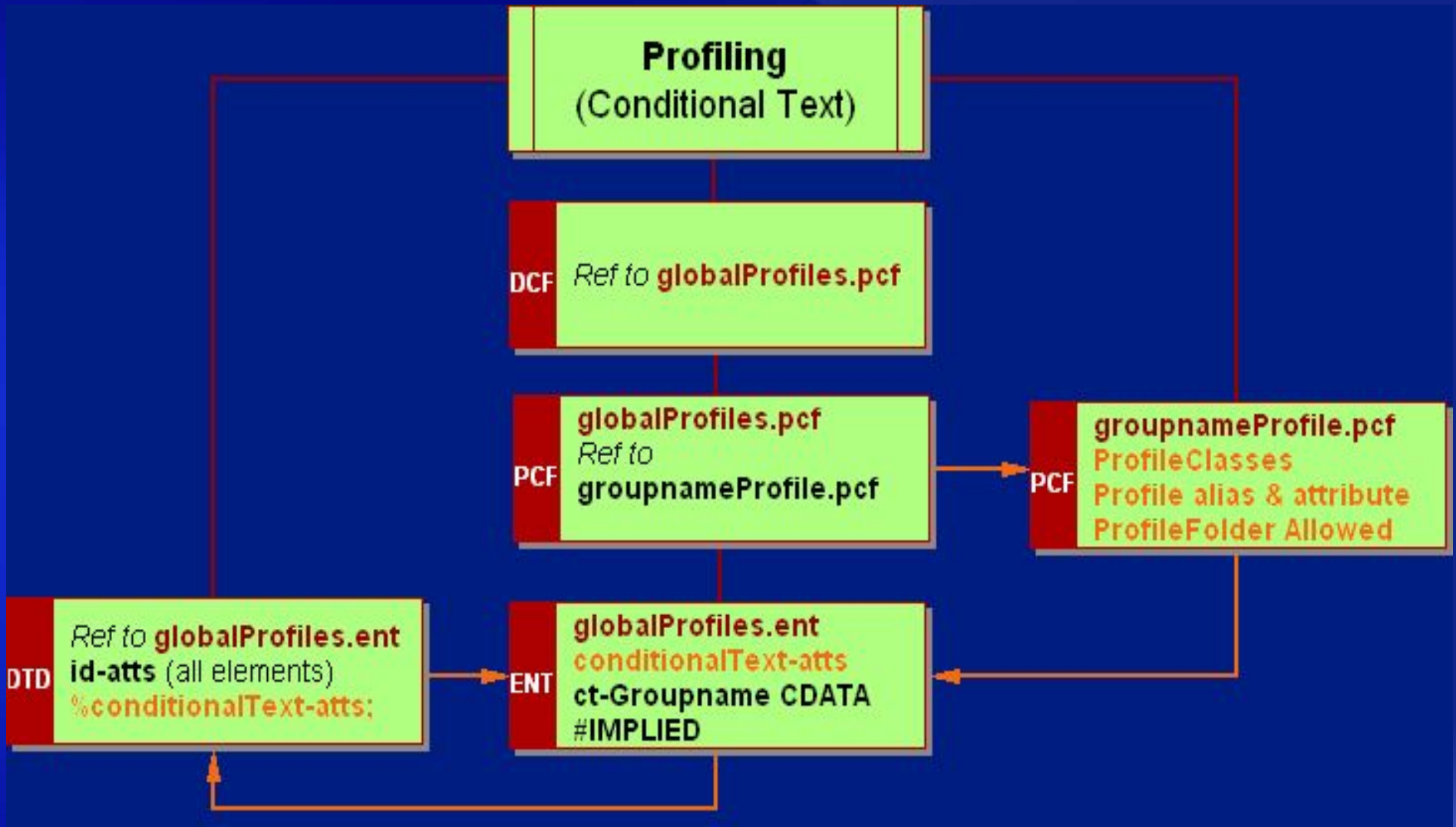


- **TS Portal** is the gateway for all content for all users (internal and external)
- **Database** is a repository for all XML content being developed
- **Epic Editor** is used to author XML content, **DCAM** is used for link management
- **Legacy Content** includes all content that will not be converted to XML
- **Publish Engine** stores and delivers all content to users
- **Release List** is a web interface that controls the publishing of all content

Solution - Highlights

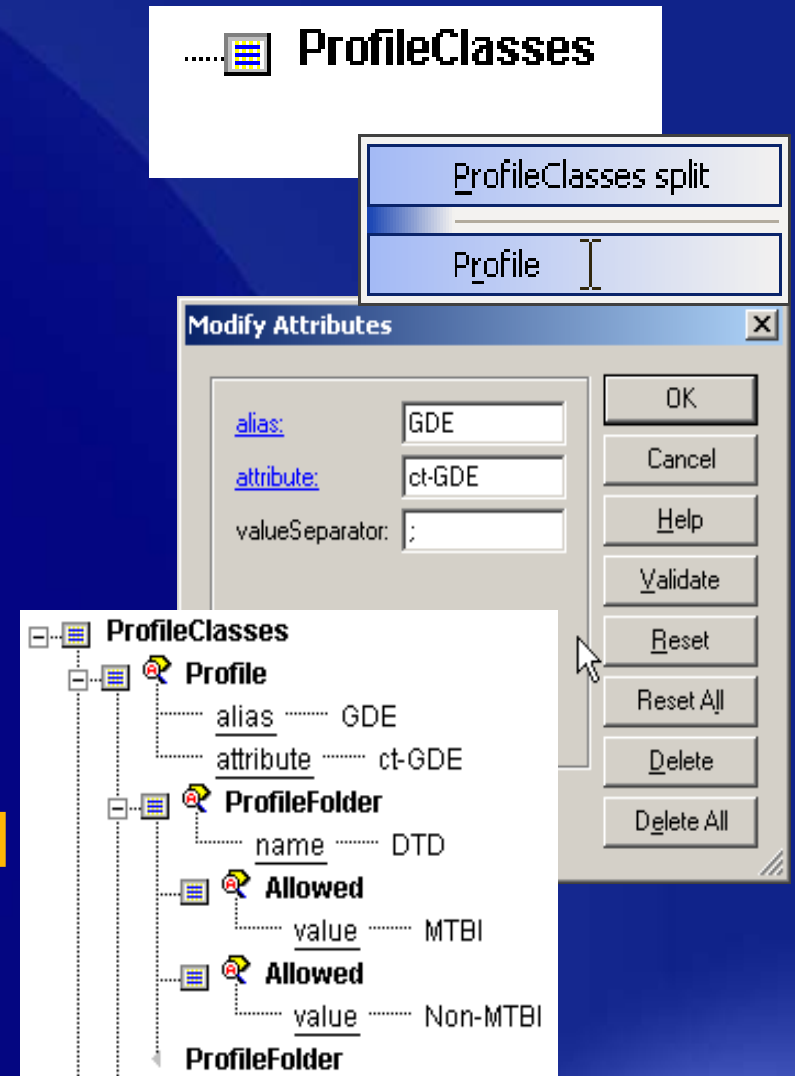
- Conditional text tags are automatically captured and mapped to a profile configuration file (**PCF**) for each **Nortel** document authoring group
- Group PCFs referenced from **globalProfiles.pcf**
- **globalProfiles.pcf** referenced from a document configuration file (**DCF**)
- A profile attribute for each group PCF added to **globalProfiles.ent** (**ENT**) and **globalProfiles.ent** referenced from a document type definition (**DTD**) file
- PCFs centrally controlled within the database repository and used with all documents

Solution - Overview



Solution – Create a Group PCF

1. Open groupnameProfile.pcf with *Epic Editor*
2. Position cursor after **ProfileClasses**; press **Enter**; click on **Profile**
3. In **alias** field, type **GDE**; in **attribute** field, type **ct-GDE**; click on **OK**
4. Insert **Allowed** or **ProfileFolder** elements for each condition; add **Allowed** elements for each condition value
5. Save As... **gdeProfile.pcf**



Solution – Add to globalProfile.pcf

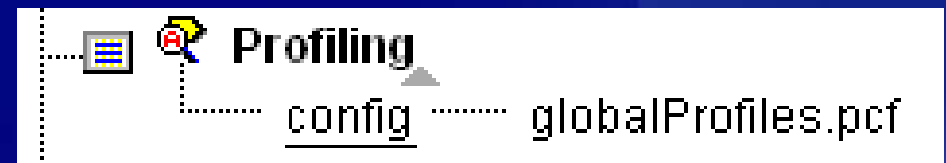
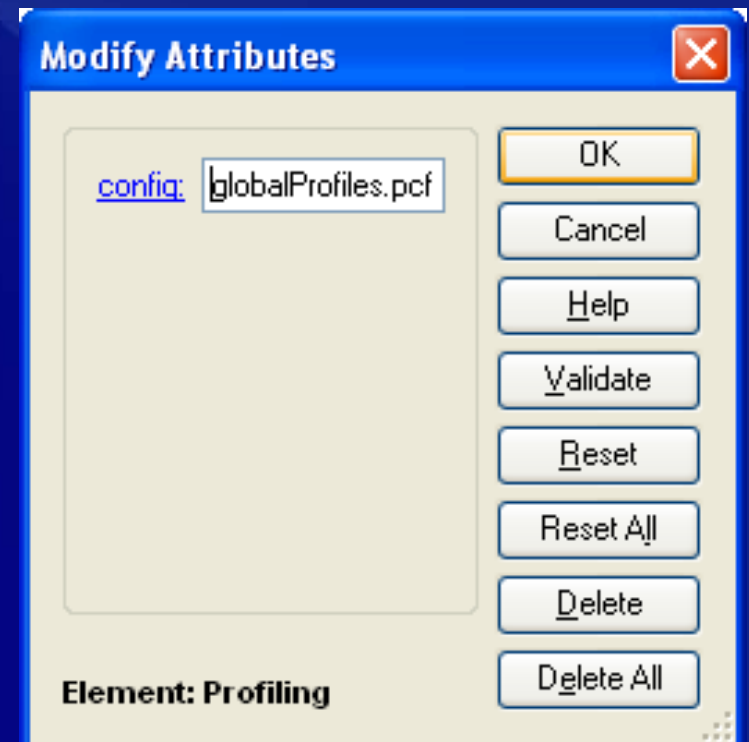
1. Open [globalProfiles.pcf](#) with your favourite text editor
2. Add `&gdeProfile;` to the Profiles section
3. Add `<!ENTITY gdeProfile SYSTEM "gdeProfile.pcf">` to the entity declaration section
4. **Save** and **Exit** the file

```
<Profiles>  
&gdeProfile;  
&exampleProfile;  
  
</Profiles>
```

```
<?xml version="1.0" encoding="utf-8"?>  
<!--Arbortext, Inc., 1988-2004, v.4002-->  
<!DOCTYPE Profiles PUBLIC "-//Arbortext//DTD Profiling  
Configuration 1.0//EN" "profiling.dtd" [  
<!ENTITY gdeProfile SYSTEM "gdeProfile.pcf">  
<!ENTITY exampleProfile SYSTEM "exampleProfile.pcf">  
]  
>
```


Solution – Add to the DCF

1. Open the DCF with *Epic Editor*
2. Insert a **Profiling** element
3. Type **globalProfiles.pcf** in the **config** field and then click on **OK**
4. **Save** and **Exit** the file



Solution – Add to globalProfiles.ent

1. Open [globalProfiles.ent](#) with *Epic Editor*
2. Add **ct-GDE CDATA #IMPLIED**
3. **Save** and **Exit** the file

```
<!ENTITY % conditionalText-atts
"
ct-GDE          CDATA          #IMPLIED
ct-Example     CDATA          #IMPLIED
I
"
>
```

Solution – DTD setup

- [globalProfiles.ent](#) contains [conditionalText-atts](#) entity; associated with all PCFs
- [globalProfiles.ent](#) is referenced from the [DTD](#)
- [conditionalText-atts](#) has been added to [id-atts](#)
- [id-atts](#) is associated with all elements

```
<?ELEMENT Paragraph      (%text.cnt; |
<?ATTLIST Paragraph
      %id-atts;
      %property-att
      Rotate (Yes|No)
>
```

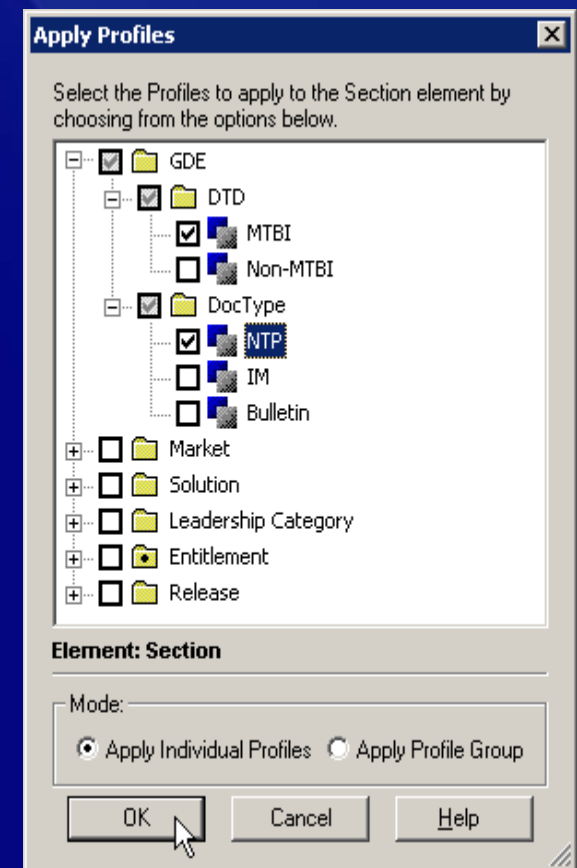
```
<?ENTITY % conditionalText-atts
..
```

```
<?ENTITY % globalProfiles
PUBLIC "-//IBM//ELEMENTS NONMTBI
Profile//EN" "globalProfiles.ent">
%globalProfiles;
```

```
<?ENTITY % id-atts
      "id      ID      #IMPLIED
      conref CDATA  #IMPLIED
      %conditionalText-atts;
      ChangeBar (Add|Delete|Change)
      targetText CDATA  #IMPLIED
      Label CDATA  #IMPLIED"
>
```

Using – Apply a Profile

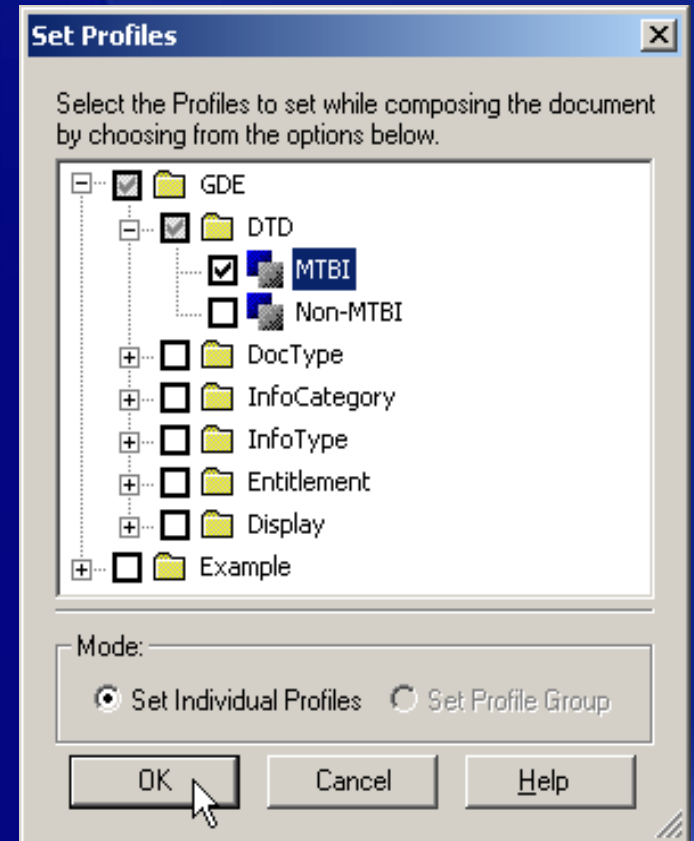
1. Within a document opened by *Epic Editor*, position the cursor anywhere in an element
2. Select **Edit > Profiles > Apply Profiles...**
3. Select *Mode* **Apply Individual Profiles**
4. Check the required profile values
5. Click **OK** to apply the profiling
The checked profile values will be applied to the element attributes



Using – Set a Profile

1. Open a document with *Epic Editor*
2. Select **Edit > Profiles > View Profiled Document...**
3. Click on profile values to set them; click on **OK**

Both unprofiled and set profiled content will be displayed; unset profiled content is hidden



Next Steps

- Delete, consolidate and organize the *FrameMaker* conditional text tags captured as **Nortel Technical Documentation Application (NTDA)** profiling values
- Define an NTDA profiling strategy to support the reuse of content
- Prepare NTDA guidelines for the appropriate use of profiling
- Investigate providing different color indicators for profile attributes and values within the NTDA XML edit stylesheet

The logo features the text "PTC" in a bold, white, sans-serif font, followed by the word "user" in a white, italicized serif font. The word "user" is positioned on a red, tilted square background.

PTC *user*

**WORLD
EVENT
2006**

PTC *user*